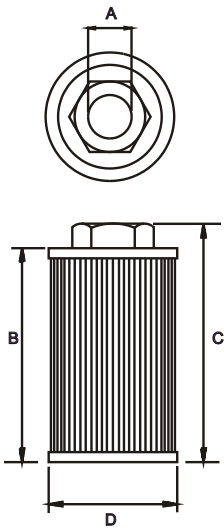


SUCTION STRAINER - S C 2

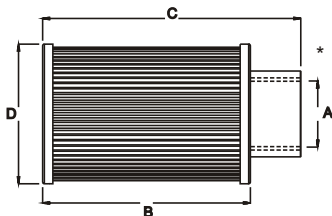


- REUSABLE STAINLESS STEEL 100 MESH STANDARD
- STURDY ALL METAL STEEL CONSTRUCTION
- FILTRATION 149 MICRONS
- CONTINUOUS EPOXY BOND
- MAX. WORKING TEMP. 80° C.
- SUITABLE FOR HYDRAULIC / MINERAL OIL
- FLEXIBLE MAGNETIC WRAP AVAILABLE



MODEL NO	FLOW	THREAD SIZE		TOTAL HT		CAP DIA	SCREEN AREA (SQ. CMS)	WT KGS	MAGNET WRAP
	LPM	A	CODE	B	C	D			
SC 2 - 003	12	3/8	03	50	62	42	220	0.16	1
SC 2 - 005	20	1/2	04	64	78	66	400	0.24	1
SC 2 - 007	30	3/4	06	75	89	66	438	0.28	2
SC 2 - 010	40	1	08	122	137	66	710	0.33	2
SC 2 - 020	80	1 - 1/4	10	160	175	85	1045	0.45	2
SC 2 - 030	120	1 - 1/2	12	190	205	85	1450	0.50	2
SC 2 - 050	200	1 - 1/2	12	240	254	100	2195	0.60	2
SC 2 - 051	200	2	16	240	254	100	2195	0.70	2
SC 2 - 075	300	2 - 1/2	20	240	255	130	2580	0.95	3
SC 2 - 100	400	3	24	285	300	130	3225	1.15	3
SC 2 - 150	600	3	24	325	340	130	4650	1.60	3
*SC 2 - 200	800	4	32	220	295	200	6225	4.20	4
*SC 2 - 300	1200	4	32	306	381	200	8840	4.50	4
*SC 2 - 400	1600	4	32	387	462	200	11225	4.80	4
*SC 2 - 600	2400	4	32	540	615	200	15675	5.40	4

* AVAILABLE WITH NPT THREADS ONLY



MODEL CODE : ASSEMBLY

SC 2	- 010	- **	- **	- **	- **	- **
SERIES	SIZE	PORT THDS. SIZE	PORT THDS. CONNECTION	MICRONS. OPTIONAL #	FEATURE. SPECIAL 1	FEATURE. SPECIAL 2
		REFER TABLE OMIT IF STD	B-BSPP - STD N-NPT - OPTIONAL	149 - SS 100 MESH STD 125 - SS 120 MESH 100 - SS 150 MESH 074 - SS 200 MESH 063 - SS 250 MESH Also - 30 / 60 MESH	R B 3 - 3 PSI ByPass Optional	M - Magnet Wrap Optional

OMIT IF STANDARAD

CONSULT FACTORY, FOR OPTIONAL / SPECIAL FEATURE

(Dimensions / Model Nos Revised W E F Oct 08)